

WHEN HELP ARRIVES

Once Security Forces arrives:

- Remain calm and follow instructions
- Put down any items in your hands (i.e., bags, jackets)
- Raise hands and spread fingers
- Keep hands visible at all times
- Avoid quick movements toward officers such as holding on to them for safety
- Avoid pointing, screaming or yelling
- Do not stop to ask response forces for help or direction when evacuating

ACTIVE SHOOTER INCIDENT

The incident will be a dynamic situation that evolves rapidly and demands immediate response from law enforcement to terminate the life-threatening situation. The immediate response of the first patrolmen on scene is to take aggressive action to find and stop the shooter(s). Rescue efforts will be delayed until the danger can be either mitigated or eliminated.

IMPORTANT NUMBERS

If an emergency, ALWAYS dial

911

Other numbers to know

Base Security Forces:

Base AFOSI:

Base AT Officer:

Eagle Eyes Report:



HQ AETC

SHOOTING INCIDENT THREAT AID

SHOOTING INCIDENT

IMMEDIATE DANGER

RISK of DANGER

ESCAPE or HIDE OUT

CALL 911

- Caller's Location
- Number of Shooters
- Types of Weapons
- Shooter Location & Direction of Travel
- Shooter Description

SECURE self & location

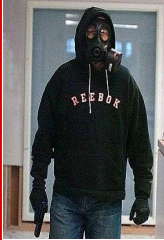
SHELTER in place

MITIGATE: lock doors, turn off lights, limit movement

ACCOUNT for personnel & report

WAIT for response forces & instructions

IMMEDIATE DANGER



If you find yourself in immediate danger during a shooting incident within your work center **Escape** from the scene or **Hide Out**.

During **ESCAPE** plan your route, leave your stuff behind and exit with your hands visible. Security Forces personnel may mistake you for the shooter.



If you **HIDE OUT** contact 911 as soon as possible.

As a **LAST RESORT...TAKE ACTION**

If you find yourself in **IMMINENT DANGER** take action. Attempt to incapacitate or act with physical aggression and throw items at the active shooter.



RISK of DANGER

If you find yourself in risk of danger but are not being immediately threatened...



Secure Yourself and your Location

Once secured, position yourself in a place clear of direct fire. You should be able to observe the ingress and egress routes. This will include the process of Sheltering in place and Mitigating the vulnerabilities to the room. Mitigation will start with locking the doors and windows and barricading the access. Turn off the lights and make your location appear unoccupied. Monitor communications i.e. phone, computer, radio.

Account for Personnel and Report

By whatever means you have available contact your Unit Control Center (UCC) or Chain of Command (CoC) and inform them of your location, status and the personnel present.

Stay Put

Until the authorities instruct you to move or you have been released **DO NOT MOVE**. Persons milling about increase confusion and the likelihood of injury.

WARNING SIGNS

Someone may need help if:

- Their behavior is unusually aggressive, odd or scary
- They make threats of violence or retribution (serious or joking)
- They are distraught or show signs of suicide
- They're overheard making comments of planned/intended violence
- There is a gang/cult ideation
- They fight or perform acts of violence on the installation
- There is a presence of weapons (guns, knives, suspicious objects)

INFORMATION

Provide to Security Forces:

- Your Location
- Number of shooters
- Shooter's Location
- Description of the Shooter
- Type of weapons involved
- Shooters direction of movement